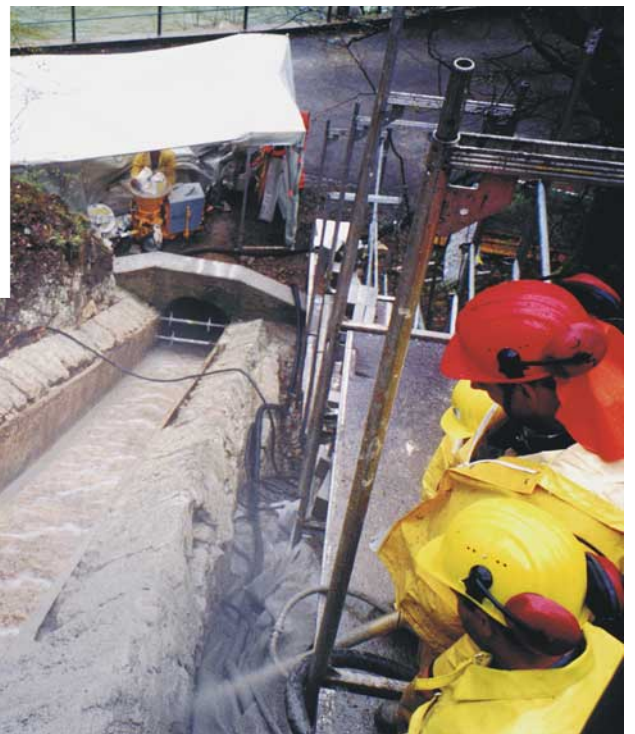




AL-246 Concrete spraying machines



The new **AL-246** is a multi-purpose machine. In tunnelling or rehabilitation work, this small, efficient machine is an excellent working tool.

**Semi-wet or dry
for small to medium volumes
mobile and universal,
for spraying mortar or concrete**



Aliva, application-wise versatile



Two AL-246 spraying concrete by hand

Robust and proven

The Aliva AL-246 is a sturdy concrete spraying machine for the dry spraying process. The dry mix passes from the hopper (a vibrating hopper is available as an option) into the rotor chambers. The revolving rotor conveys the dry mix into the air outlet chamber. The dry mix free falls into the output airflow. The material is conveyed by air in a hose or tube to the nozzle, where the water is added. Thanks to its variable output, the AL-246 can be used as well for small jobs, such as joint filling, as well for extensive slope consolidation work.

Sandblasting and concrete spraying

The AL-246 is particularly appropriate for rehabilitation work on concrete. The same machine serves to sandblast the exposed rebars and to spray the concrete for subsequent reprofiling.

Modular concept

The modular design of the AL-246 allows maximum flexibility in its use.

Performance and connections of AL-246

Type	Air	BASIC	EXTENDED
Rotor capacity	5,6 litres	5,6 litres	3,6 litres
Output*	1,0-2,2 m3/h	2 m3/h	0,7-1,5 m3/h
Hose	50 mm	50 mm	38 mm
Conveying air requirement**	6-8 m3/min.	6-8 m3/min.	3,5-5 m3/min.
Conveying distance dry	>150 m	>150 m	>150 m
Conveying high dry	> 60 m	> 60 m	> 60 m
Air pressure dry/semi-wet	2-5 bar	2-5 bar	2-5 bar
Water/air connection	3/4" / 11/2"	3/4" / 11/2"	3/4" / 11/2"
Water pressure	3-6 bar	3-6 bar	3-6 bar
Power input	3,0 kW	2,2 kW	2,2 kW
Air drive approx.**	4 m3/min./3,5 bar		

*Output capacity m3/h on the wall considering 15% rebound and 35% compaction

**1 m3/min. = 35 cfm

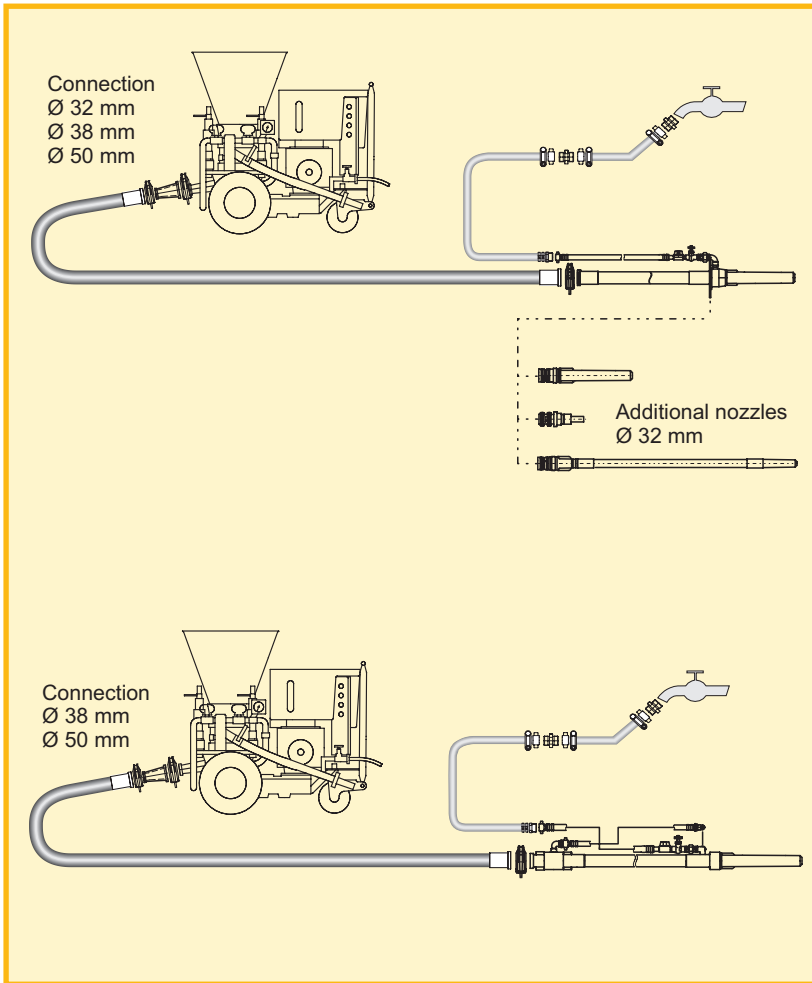
Fields of application

The Aliva AL-246, thanks to compact design and its manoeuvrability, is suitable for use in confined spaces such as mines or galleries. Besides this, it is preferably used in civil engineering construction, for rehabilitation work and in tunnel and hydropower construction.

Concrete rehabilitation
Building and Civil engineering
Preliminary tunnel waterproofing
Mining and Hydropower construction



Aliva, functionally flexible



AL-246 for dry spraying

Aliva AL-246 can be adapted to the most differing requirements thanks to the variety of its spraying attachments.

Adaptable

Dry spraying, sand blasting or reprofiling just requires switching to another spraying attachment. The ideal machine for the versatile practitioner on the jobsite.

AL-246 for the semi-wet spraying process

The AL-246 can of course also be used for the semi-wet spraying process. In this case a different spraying attachment is required.

Spraying concrete by hand

These mobile and easily manoeuvrable concrete spraying machines with their optimal output range are very popular for manual concrete spraying.

Transportation by hand

Compact design and large-size wheels allow the Aliva AL-246 to be moved around on site by one man only.

mobile
easy to handle
sturdy
variable output

Technical Data and Ordering Variants

Aliva AL-246 Air/Basic (electric)

Length x Width	1130x700 mm
Height 0,7/2,0 litres	1110 mm
Height 3,6 litres	1180 mm
Height 5,6 litres	1260 mm
Weight without variator	approx. 320 kg

Aliva AL-246 Extended (electric)

Length x Width	1200x700 mm
Height 0,7/2,0 litres	1110 mm
Height 3,6 litres	1180 mm
Height 5,6 litres	1260 mm
Weight with variator	approx. 450 kg



optionals	Air/Basic Standard ex stock	Air/Basic Custom to order	Extended Standard ex stock	Extended Custom to order
Mount	2 wheels	optional	3 wheels	optional
Rotor capacity	5,6 litre	0,7/2,0/3,6 litre	3,6 litre	0,7/2,0/5,6 litre
Drive	400V/50Hz Protection IP55 air	220/400V / 50/60Hz 440V / 60Hz air/without/special	400V/50Hz Protection IP55	220/400V / 50/60Hz 440V / 60Hz without/special
Vibrating hopper	no	optional	yes	optional
Remote control	no	no	no	optional
Lubricating pump	no	no	yes	optional
Dust bag	no	optional	yes	optional

Drive	Rotor volume	Conveying output*	Motor output	Motor speed
Electric/Variator	0,7 litre	0,4 / 0,2-0,5 m ³ /h	2,2 kW	1500 / 700-1800 rpm
Compressed air	0,7 litre	0,2-0,5 m ³ /h	3,0 kW	700-1800 rpm
Electric/Variator	2,0 litre	1,1 / 0,6-1,4 m ³ /h	2,2 kW	1500 / 700-1800 rpm
Compressed air	2,0 litre	0,6-1,4 m ³ /h	3,0 kW	700-1800 rpm
Electric/Variator	3,6 litre	2,0 / 1,1-2,5 m ³ /h	2,2 kW	1500 / 700-1800 rpm
Compressed air	3,6 litre	1,1-2,5 m ³ /h	3,0 kW	700-1800 rpm
Electric/Variator	5,6 litre	3,2 / 1,7-4,0 m ³ /h	2,2 kW	1500 / 700-1800 rpm
Compressed air	5,6 litre	1,7-4,0 m ³ /h	3,0 kW	700-1800 rpm

*Conveying output for theor. 100% degree of rotor filling

Technical and design modifications remain reserved at all times. Technical properties have been achieved under theoretical and normal conditions. Please consult the respective machine manual for all matters related to operations and maintenance.

For us a matter of principle



Sika AG Tunneling & Mining
 Bellikonstrasse 218 CH-8967 Widn / Switzerland
 Phone ++ 41 +56/649 31 11 www.sika-stm.com
 Fax ++ 41 +56/649 32 04 info@sika-stm.com

Your local dealer