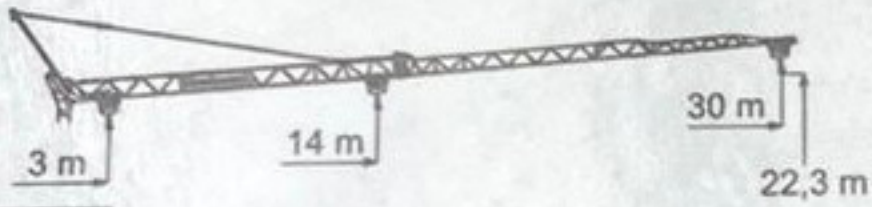
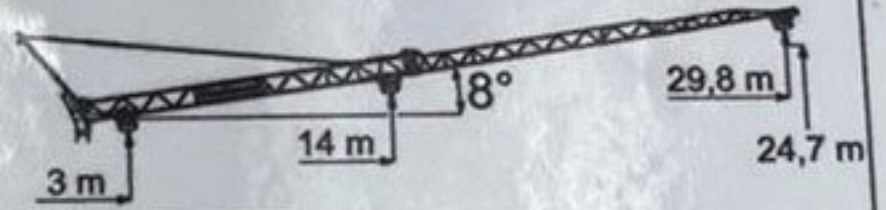


M32 4WDS



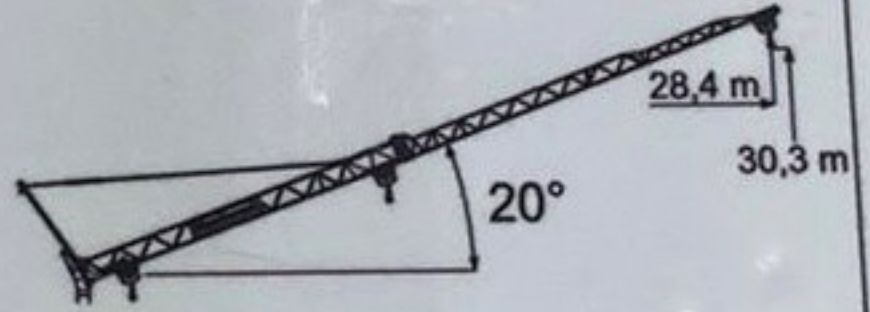
30 m

kg \ m	10,1	14	17,4	18,3	20	25	30
DM	4000	2640	2005	1885	1685	1270	1000
SM			2000	1885	1685	1270	1000
SM1				2000	1800	1375	1100



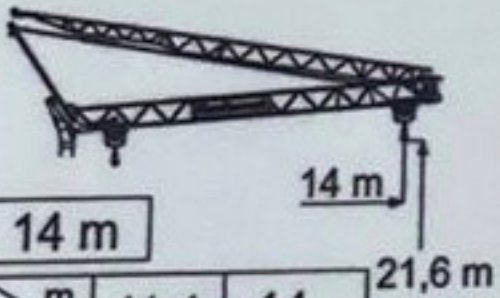
30 m - 8°

kg \ m	17,2	18,2	20	25	29,8
SM	2000	1870	1665	1255	1000
SM1		2000	1785	1365	1100



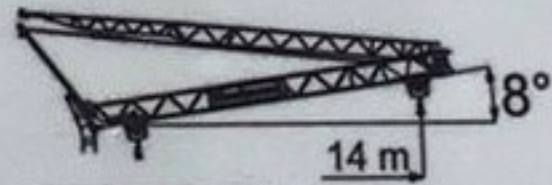
30 m - 20°

kg \ m	28,4
SM	1000
SM1	1100



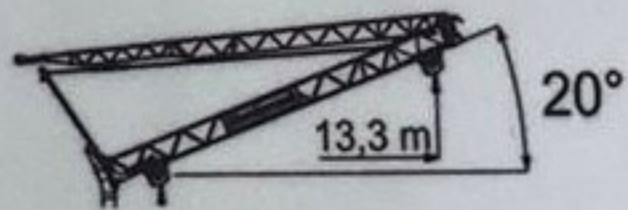
14 m

kg \ m	11,1	14
DM	4000	3000
SM		2000
SM1		2000



14 m - 8°

kg \ m	14
SM	2000
SM1	2000

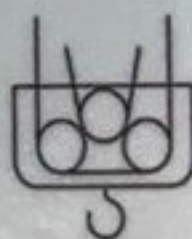


14 m - 20°

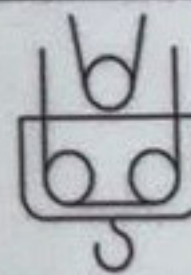
kg \ m	13,3
SM	1000
SM1	1100

⚡ 400 V (+ 6% -10%) 50 Hz - 32 A CEE - 5P

DM



SM



SM1

